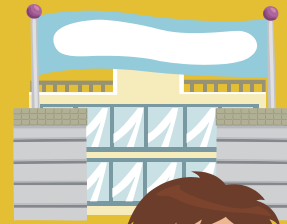


Welcome to Lower School

For Year 3 and 4 Parents





Beech

Mrs. Bailey
Mrs Chessman



Cherry
Miss Coult



Rowan
Mrs Titchener

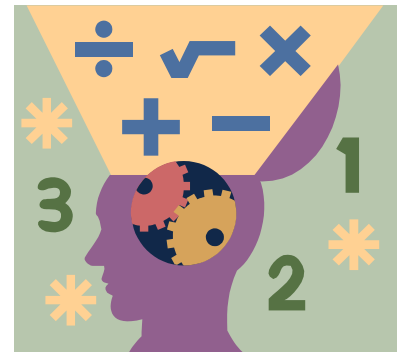
Things children will need:

Correct uniform – named.

P.E kit – named. P.E is usually on Wednesdays and Fridays this half term.

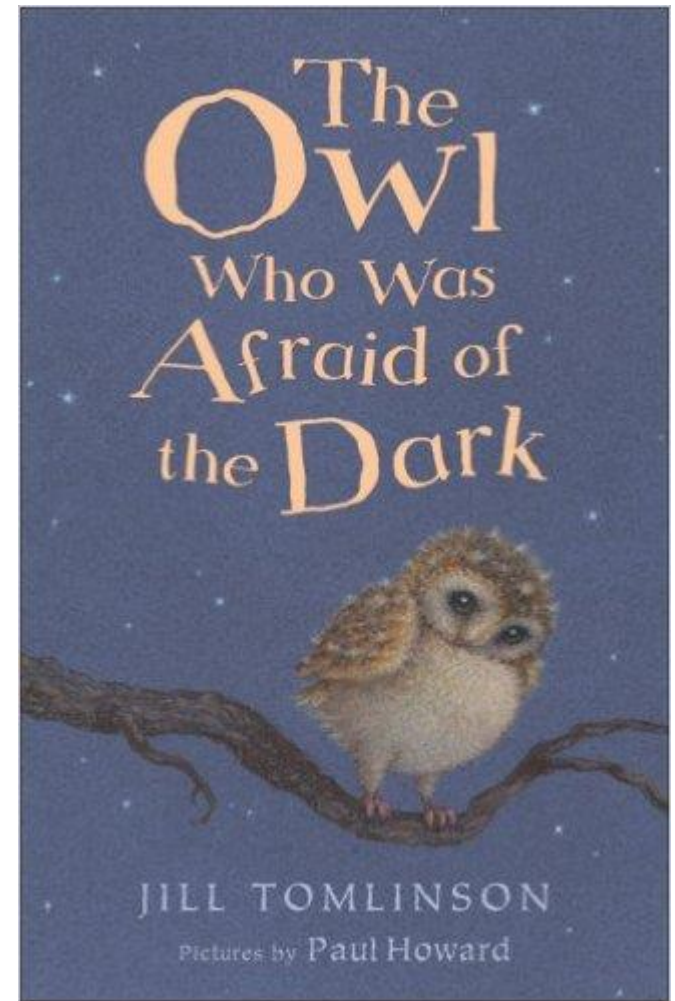
Water bottle – named.

Snack or money for a snack – named.



Things that go bump in the night!

- Writing narrative with a focus on character, settings and plot based around our book.
- After half term, adapting into a script.
- Non-fiction about owls.
- Science - light, shadows and reflection.
- Great Artist portraits.
- Christmas production.



Alpine Adventure



Grow your own



Here be Dragons



Invaders and Settlers



Homework and home support



Every Friday – writing, reading, maths.

Designed to consolidate learning and due in Tuesday.

Spellings – every day, or as much as possible. Children are tested every week.

Times Tables – every day, anywhere – whilst you're cooking, going shopping, in the car, bedtime.

Children work their way up the ladder and achieve certificates at key points.

Reading – every day whenever possible. Progress is tracked in class and through reading diaries – and updated in Guided Reading sessions.

Why reading?

Skill for a modern world – with so much information available now children need to be able to analyse and evaluate use and motive when reading.

Essential support for writing – children who read regularly are more familiar with genre layout and language and have an easier time generating ideas.

Reading is fun! – reading is an independent activity but it is a sharing experience and lets children enter other worlds.



CONTACTING US

Parents evening – early November as in term dates.

Stay and Read – every last Friday before half term.

End of day – either catch us on the playground, or visit the office to make an appointment.

Via Federation Office – by phone, if you need us to call.



Thank you for your time!

Any questions?

Any suggestions?

